

Enterprise



Retail Anywhere Enterprise is designed to manage your retail organization; everything from merchandising, inventory control, CRM, employee, financial analysis, reporting and all operational processes throughout the retail enterprise. As the hub of real-time, centralized information, Retail Anywhere Enterprise puts accurate, detailed and current information at your fingertips enabling you to improve retail operations while meeting the critical, time sensitive demands of cross-channel retailing.

Scalable

As your business grows, Retail Anywhere Enterprise provides the infrastructure you need to gather, manage and analyze data from one store or hundreds. Our scalable enterprise and merchandise structures enable you to add stores, warehouses or product lines to your existing system while continuing to maximize the return on your investment.

Full-Featured

Retail Anywhere Enterprise provides the functionality to efficiently order and distribute merchandise across your retail channel. Having the right inventory at the right place at the right time while optimizing for promotion and pricing of products maximizes sales and reduces the need for future markdowns.

Powerful

Take your data anywhere with powerful analysis and reporting tools. Whether you need to compare sales data across different regions or analyze a vendor's performance, Retail Anywhere Enterprise can deliver the exact data you need precisely when you need it.

Improve performance across your retail chain with Retail Anywhere Enterprise

- Merchandise Management
- Centralizing your POS
- Enterprise-wide inventory control
- eCommerce management
- Real-time data
- Enterprise-wide data mining
- Dynamic reporting
- Financial analysis
- Accounting integration
- Inventory performance analysis
- User-Defined Enterprise and Merchandiser Hierarchies



Enterprise

Features



Inventory Management

- Enterprise Inventory Administration
- Stock Ledger
- Physical Inventory and Cycle Counts
- Merchandise Location Management
- Item Adjustments

Merchandise Flow Management

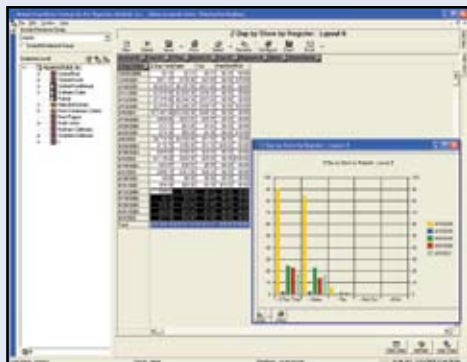
- Dock Check-In*
- Receiving
- Put Away*
- Enterprise Transfers
- Pick Instructions*

Item & Price Maintenance

- Style Lookup and Size/Color Matrix
- Item Maintenance
- Price Maintenance
- Promotional Price Management
- Item Tax Maintenance
- Item Selling Rules Maintenance
- Item and Shelf Labeling

Store Administration and POS Processing

- Store Control Maintenance
- POS Access Control
- POS Programming
- POS Communications
- eCommerce Management
- Central Returns Management



Enterprise—User interface

Ordering

- Replenishment Management
- Automated Purchase Order Creation
- Manual Purchase Order Creation
- Product Allocation
- Requisition Management*

Work Force Management

- Employee Maintenance
- Time and Attendance
- Payroll Interface
- Employee Performance Management

Customer Relationship Management

- Customer History and Maintenance
- Loyalty Program
- Sales Analysis

Reporting and Data Analysis

- Store Sales Reporting
- Store Product Ranking
- Hourly Sales Analysis
- Employee Performance
- Inventory Valuation
- Item and Style Performance
- Inventory Turn
- Inventory Transactions
- And Many More...

Accounting Integration

- General Ledger
- Enterprise journals
- Accounts payable
- Payroll export

Technology

- Microsoft SQL Server®
- Data Replication use with any ODBC Compliant Analysis Tool

*Retail Anywhere Warehouse required