

Warehouse



Retail Anywhere Warehouse provides all the functionality you need to run an efficient warehouse management system resulting in improved productivity and better customer service. Your customers and your bottom line will benefit from our completely integrated warehouse management system that reduces lead times while increasing efficiency and accuracy of your receiving and distribution process.

Improved Productivity

Retail Anywhere Warehouse gives you better control over the movement and storage of inventory within your warehouse.



Better control enables you to maximize the efficiency of receiving and distribution of goods, optimizes warehouse space and lets you know exactly where your inventory is located. Delivering improved productivity while reducing warehouse and inventory costs.

Harness the Power

From receiving documents to tracking replenishment needs to printing detailed product transaction reports, Retail Anywhere Warehouse provides you with an easy-to-use solution that's flexible to handle changes in your warehouse management needs.

Warehouse puts you in control of your inventory. At all times you know exactly what you have and where it is; anywhere in the world.

Retail Anywhere Warehouse solution assures your retail business is running smoothly and efficiently

- Accelerate & monitor merchandise flow through the entire enterprise
- Manage real-time physical and virtual inventory
- Maintain detailed purchase and distribution records
- Streamline warehouse administration
- Print customized reports
- Simplify tracking with easy-to-use handheld units



Warehouse

Features



Inventory Management

- Location/Bin Inventory Database
- Stock Ledger
- Physical Inventory and Cycle Counts
- Item Adjustments

Purchasing

- Purchase Order Creation
- Replenishment Management
- Requisition Management

Warehouse Administration

- Location/Bin Definitions
- Priority Pick/Put Away
- Enterprise Location Grouping
- Roles and Security

Merchandise Flow Management

Receiving

- Dock Check-In
- Receiving Documents
- Tag and Label Printing
- Put Away Instructions

Transfers

- Replenishment Management
- Transfer Documents
- Pick Instructions

Handheld Support

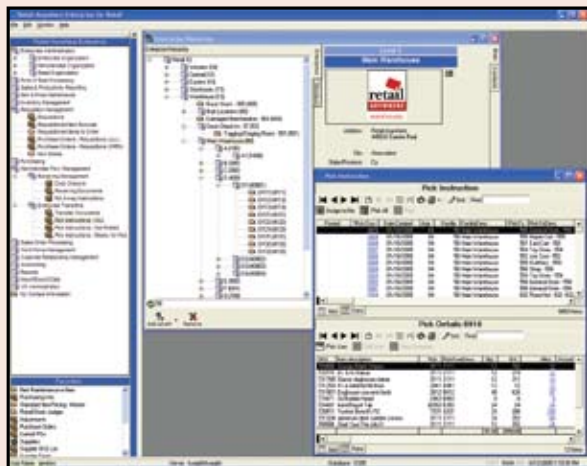
- Batch Collectors
- RF/802.11 Terminals
- Pocket PC® Web (IIS)
- 3rd Party Import/Exports

Reporting

- Transaction History
- Upcoming Events
- Inventory Locations
- Stock Levels

Technology

- Microsoft SQL Server®
- Microsoft Reporting Services®
- Microsoft Internet Information Services®



Warehouse—User interface