

Ultra compact kiosk delivers dynamic self-service at the point of decision



IBM Anyplace Kiosk



New IBM Anyplace Kiosk 17" model

Highlights

- ***Sleek, ultra compact kiosk combines processor, flat panel touchscreen, MSR and scanner to fit virtually anywhere***
- ***New 17" touchscreen models – bigger screen, yet still ultra compact***
- ***Flexible platform delivers a dynamic interactive experience and is cost-effective for pervasive installation***
- ***Fast and easy to install, service and manage***

Bring the kiosk to the customer

Today, people want instant access to information, special services and e-business transactions, whether they are shopping, traveling or dining out. With IBM Anyplace Kiosk solutions, you can deliver a rich, compelling interactive experience directly to customers – virtually anywhere. These kiosks combine robust computing power, a state-of-the-art infrared (IR) touchscreen display and optional peripherals in a slim, tapered design that is easy to place. Cost-effective, they are ideal for pervasive installation. Multiple mounting options enable you to place kiosks at touchpoints convenient to customers and employees.

Compact IBM Anyplace Kiosk solutions can help you revolutionize your business, differentiate yourself from competitors, and influence end-user decisions as they happen.

Enabling business innovation in a bigger, bolder way

Meet the newest member of the IBM Anyplace Kiosk family, the 17" model. With more touchscreen real estate, yet still ultra compact, this model delivers greater end-user impact with more detail and higher resolution on screen images, while its sleek design allows it to be installed virtually anywhere. A bigger screen also makes it easier to use and offers the possibility of viewing by more than one person.

Extensive range of self-service opportunities

A broader family of high-powered, multimedia kiosk offerings creates new opportunities to revolutionize the customer experience. IBM Anyplace Kiosk solutions are equipped to span multiple markets, including retail, travel/tourism, communications, financial, government, transportation, entertainment, healthcare and other sectors. Solutions available from IBM and IBM Business Partners include in-aisle CD/DVD preview and digital download stations, guided selling tools, self-ordering in restaurants, unattended check-in for hotel guests, and much more. This list includes Ready for IBM Retail Store Innovations solutions pretested for use with IBM Anyplace Kiosk systems.¹ In addition, the IBM Anyplace Kiosk can be integrated with diverse applications and devices enterprise-wide, using a standards-based platform – the IBM Store Integration Framework – to deliver a consistent and realtime view of your business to the customer. With this framework, you can react quickly to changing business needs, adopt new applications more easily and deliver differentiated services for success.



Compelling multimedia experience

With a choice of 12", 15" or 17" flat panel touchscreens, extra bright displays² and superior IR touch technology, the IBM Anyplace Kiosk provides exceptional image quality and helps provide rapid, accurate self-service transactions. Intel® Extreme Graphics 2 technology delivers intense, realistic 3D graphics and full screen, full motion video for a truly exciting interactive experience. It features an IR touchscreen that typically doesn't need to be calibrated, and has a higher contrast ratio and reduced glare for improved screen visibility. High quality stereo speakers support audio applications and a presence sensor activates the kiosk when someone approaches, which helps capture the end user's attention.

Ultra compact form factor

The IBM Anyplace Kiosk features an ultra compact form factor that starts at 2.8"/72mm³ deep and weighs less than 10lbs (12" model). The compact size allows customers to place kiosks at the point of decision, whether that placement is on an aisle end cap, counter, wall or integrated into a free-standing floor mount. The flexible mounting options

revolutionize how information is conveyed and how end users may dynamically interact with the self-service solution.

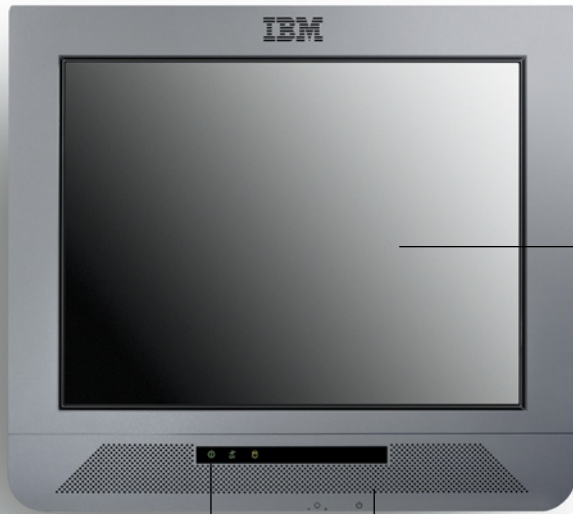
Versatile options for scanning available

Two options for scanners are offered. The versatile IBM Anyplace Omni Scanner makes scanning barcodes both easy and intuitive with the capability to capture a variety of numerous barcodes in any orientation. This high-performance scanner was designed specifically to complement the IBM Anyplace Kiosk and offers a compact, rugged design built to work in virtually any retail environment. Retailers can also choose the IBM Anyplace Line Scanner, which is cost-efficient and ideal for basic barcode scanning kiosk applications.



IBM Anyplace Kiosk 12", 15" and 17"

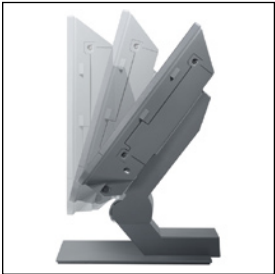
IBM Anyplace Kiosk features



12", 15" or 17" IR touchscreen display has no plastic film to scratch and is designed to help avoid the need for recalibration

Integrated stereo speakers for high-quality audio

Presence detector can activate kiosk as end users approach

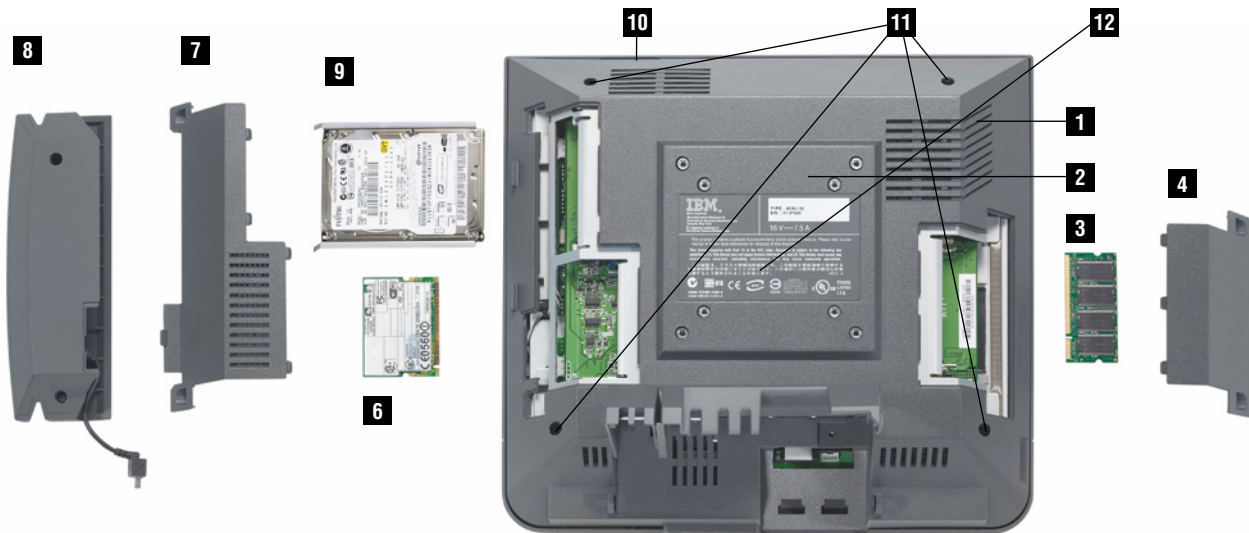


Multiple mounting devices (optional) enable you to place kiosks at touchpoints convenient to customers and employees. These options (shown) include tabletop mounts with a wide tilt range for ergonomically correct viewing; third-party mounts such as the articulated radial arm; and flush-to-wall mounts.

Integrated all-in-one unit

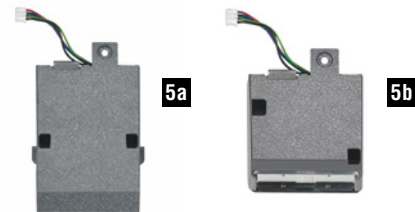
The IBM Anyplace Kiosk solution is an integrated, all-in-one unit that is purpose-optimized for the self-service environment, combining processor, flat panel touchscreen, integrated MSR and scanner option into a single device. A robust bezel cover design provides superior cable management and tamper resistant user controls. These kiosks offer an integrated mini-PCI slot⁴ for advanced,

high-speed wireless LAN connectivity,⁵ USB and serial ports to accommodate a variety of external peripherals, and a single power cord to ease installation. Customers may order the IBM Anyplace Kiosk with a hard disk drive or as a diskless thin client device. External attachment points allow attachment of brand-specific signage, faceplates or other peripherals.



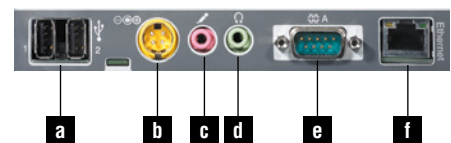
- 1 Intel Celeron® M Processor 320 (1.3GHz, 400 FSB, 512KB cache)⁶
- 2 Intel Extreme Graphics 2 technology delivers intense, 3D graphics with sharp images
- 3 Two SO-DIM memory slots improve expandability
- 4 Side panel
- 5 Barcode scanners (optional features)
 - 5a. IBM Anyplace Omni Scanner
 - 5b. IBM Anyplace Line Scanner
- 6 Optional 802.11b/g wireless support via mini-PCI adapter⁴

- 7 Side panel
- 8 Optional MSR
- 9 40GB⁷ hard disk drive (optional on select models – standard on all 17” models)
- 10 Splash-resistant louvers allow airflow and protect internal electronics
- 11 Threaded mounting points for customized faceplates, signage or additional peripherals (for example, biometric reader)
- 12 VESA mounting plate easily attaches to a variety of compliant mounts (available with optional wall-mount or countertop kit)



- a. Two high-speed USB 2.0 ports
- b. External power supply minimizes kiosk size, keeps heat away from electronics and simplifies service
- c. Microphone port

- d. Headphone port
- e. External RS-232 port
- f. Integrated 10/100 Ethernet provides the speed and bandwidth for LAN communications and Internet access⁵



Robust, stable platform helps deliver strong investment protection

Self-service hardened, IBM Anyplace Kiosk solutions are engineered to help deliver long life and a stable platform. They feature a rugged, durable exterior designed to help withstand frequent usage and rough handling, with a sealed, spill-resistant display. IBM kiosk solutions go through rigorous manufacturing and testing processes to review how these devices will perform, as designed, in

real world environments. Microsoft® Windows® XP and Linux operating systems are offered, and Microsoft Windows 2000 is supported.

Easy to install, service and manage

IBM Anyplace Kiosk solutions come with an industry-standard VESA mounting plate, or with the option of integrated wireless connectivity for a single-cable setup⁵ that makes them fast and easy to install or remove for service. These kiosks

also incorporate hidden switches and a minimal number of cover panel screws, so service providers have fast access to internal components. Plus, Wired for Management (WfM) compliance is offered, enabling convenient remote management.

IBM Anyplace Kiosk at a glance

Hardware

Processor	Intel Celeron M Processor 320 (1.3GHz, 400 FSB, 512KB cache) ⁸
Hard disk drive (optional)	40GB option (optional on select models, standard on all 17" models – see table below)
System memory ⁹	256MB DDR (upgradeable to 2GB)
Graphics	Intel Extreme Graphics 2
Slots	2 SO-DIMM slots (standard), single PC card expansion slot (optional)
Ports	2 high-speed USB 2.0, 1 RS-232, 2 internal RS-232 (for optional MSR and scanner), headphone, microphone
Power consumption	40W typical/120W maximum

System dimensions and weight

Dimensions (WxDxH)	12" model: 12.4 x 2.8 x 12.2"/315 x 72 x 310mm 15" model: 15 x 2.8 x 14"/380 x 72 x 355mm 17" model: 16.8 x 3.1 x 15.7"/399 x 78 x 427mm
Weight ¹⁰	12" model: 9.5lbs/4.4kg 15" model: 11.5lbs/5.3kg 17" model: 16lbs/7.4kg

Software

Operating systems supported	IBM Retail Environment for SUSE LINUX (IRES) ¹¹ , Novell's LINUX Point of Service (NLPOS), Microsoft Windows XP Professional Edition ¹² , Microsoft Windows Embedded for Point of Service (preload on select models – see table below) and Microsoft Windows 2000
Drivers supported	Microsoft Windows, OPOS, JavaPOS™ ¹³

Industry standards

Systems management	WfM, SMBIOS, Wake on LAN® and PXE
Power management	APM 1.2 with Linux, ACPI 1.0 with Microsoft Windows

Peripheral options

	<ul style="list-style-type: none"> • Integrated 3-track MSR • Choice of two barcode scanners available (optional): <ul style="list-style-type: none"> – Anyplace Omni Scanner – Anyplace Line Scanner 	<ul style="list-style-type: none"> • Single-slot cardbus socket (special order) • 802.11b/g wireless support via mini-PCI adapter⁴ • Flush-to-wall mount • Tabletop tilt mount
--	--	---

Services

Limited warranty ¹⁴	One year onsite. Depot service is model dependent and varies by geography. Please contact your IBM representative for more information
Technical support ¹⁵	24x7 phone support and Web-based help (during limited warranty period)
Options ¹⁶	Onsite service available

	Microsoft Windows Embedded for Point of Service preloaded 40GB hard drive standard		No preloaded operating system 40GB hard drive standard		No preloaded operating system No standard hard drive	
Screen size	Warranty – depot	Warranty – onsite, 24x7	Warranty – depot	Warranty – onsite, 24x7	Warranty – depot	Warranty – onsite, 24x7
12" touchscreen	Model E32	Model EZ2	–	–	Model 132	Model 1Z2
15" touchscreen	Model E35	Model EZ5	–	–	Model 135	Model 1Z5
17" touchscreen	Model E37	Model EZ7	Model 137	Model 1Z7	–	–

For more information

To learn more about IBM Anyplace Kiosk solutions, contact your local IBM sales representative, call us at 1 800 IBM-CALL (1 800 426-2255), or 1 770 863-1000 outside the United States or Canada, or visit:

ibm.com/industries/retail/store

- 1 IBM is not the licensor of any Business Partner's product or service and makes no warranties, expressed or implied, including any implied warranties of merchantability or fitness of a particular purpose. Statements made by IBM Business Partners that offer Ready for IBM Retail Store Innovations products are provided by the relevant third-party and not IBM.
- 2 Dual bulbs for 12" and 15"; quad bulbs for 17" model.
- 3 17" model is 3.1"/78mm deep.
- 4 Not available worldwide. Ask your representative for details.
- 5 Internet access separate, not included.
- 6 GHz refers only to microprocessor internal clock speed; many factors affect application performance.
- 7 MB/GB equals one million/billion bytes when referring to storage capacity; accessibility may be less.
- 8 Processor socket suitable for upgrade.
- 9 Memory supports both system and video. Enables balanced memory usage between graphics and system for optimal performance.
- 10 Represents weight of system only, not mounted on stand and exclusive of power supply.
- 11 This is a service support offering from IBM. The SUSE Linux operating system is distributed separately by SUSE directly to the customer. IRES support currently available on 12" and 15" models only. Planned availability for the 17" model in the first half of 2007.
- 12 Available by special order. Microsoft Windows XP Professional with restrictive use described in the End User License agreement.
- 13 Available for select operating systems and devices.
- 14 For a copy of the terms and conditions of IBM's Statement of Limited Warranty, please contact your IBM representative or reseller.
- 15 Technical response times may vary.
- 16 For more information, please contact your IBM representative.

Cover shows IBM Anyplace Kiosk with optional integrated MSR and integrated bar code scanner (optional).

Page 2 shows 12", 15" and 17" IBM Anyplace Kiosk with optional integrated MSR and integrated bar code scanner (optional).

Page 3 shows (top) IBM Anyplace Kiosk; (center) (l to r) Tilting IBM Anyplace Kiosk on tabletop mount (optional), IBM Anyplace Kiosk on articulated radial arm (third-party option) with integrated MSR and integrated bar code scanner (both optional), and IBM Anyplace Kiosk on flush-to-wall mount (optional).

Page 4 shows (top) IBM Anyplace Kiosk with removeable parts (includes optional peripherals and hard disk drive) and (bottom) IBM Anyplace Kiosk input/output (I/O) panel.



© 2006 International Business Machine Corporation
All Rights Reserved.

IBM Retail Store Solutions
P.O. Box 12195, 3039 Cornwallis Road
Research Triangle Park
NC 27709
U.S.A.

Printed in the United States of America
05-06

- © IBM, the IBM logo, the Ready for IBM Retail Store Innovations Mark and the trademarks contained therein, and Wake on LAN are trademarks of International Business Machines in the United States, other countries, or both. For a list of additional trademarks, please see **ibm.com/legal/copytrade/shtml**
- © Intel and Celeron are registered trademarks of Intel Corporation in the United States, other countries, or both.
- ™ Java and all Java-based trademarks are trademarks of Sun Microsystems, Inc. in the United States, other countries, or both.
- ™ Linux is a trademark of Linus Torvalds in the United States, other countries or both.
- © Microsoft and Windows are registered trademarks of Microsoft Corporation in the United States, other countries, or both.

Other company, product and service names may be trademarks or service marks of others.

IBM assumes no responsibility or liability for any use of the information contained herein. Nothing in this document shall operate as an express or implied license or indemnity under the intellectual property rights of IBM or third parties. No warranties of any kind including but not limited to warranties of merchantability or fitness for a particular purpose are offered in this document. For more details on limited warranty terms and conditions or extended warranty, please contact your IBM representative.

References in this publication to IBM products or services do not imply that IBM intends to make them available in all countries in which IBM operates. Copying or downloading the images contained in this document is expressly prohibited without the written consent of IBM. Any proposed use of claims in these materials outside of the United States must be reviewed by local IBM country counsel prior to such use. The information could include technical inaccuracies or typographical errors. IBM may make improvements and/or changes in the product(s) or the program(s) described in this publication at any time without notice.

The IBM home page on the Internet can be found at **ibm.com**

Printed in the United States on recycled paper containing 10% recovered post-consumer fiber.

G210-7045-02